

CarBook

carbookmagazine.com

MAGAZINE

AL HABTOOR MOTORS LAUNCHES

The Newly Redesigned Flagship
Mitsubishi & JAC Showrooms
in Dubai



September - October 2023 Issue

FERRARI 296 GTS

The epitome Of Driving Pleasure

Elegance is an attitude


Régé-Jean Page



لونغين
LONGINES




THE LONGINES
MASTER COLLECTION

CONTENTS



COVER STORY
Ahmed Al Habtoor Launches
The newly redesigned flagship Mitsubishi showroom in Deira

6



COVER STORY
Ferrari 296 GTS
Presented by Al Tayer Motors

12



Feature
GRAND UNVEILING OF AL HABTOOR MOTORS' STATE-OF-THE-ARTE
JAC Showroom on Sheikh Zayed Road

20



First Drive
2024 ROLLS-ROYCE SPECTRE
The Marque's First Fully-Electric Motor Car

24



Road Test
2024 LEXUS UX 250H
Super Luxury Crossover

34

Dubai Duty Free

CLICK ON YOUR FAVOURITE
PRODUCTS. COLLECT THEM
WHEN YOU FLY.

Save time when you fly with the Dubai Duty Free Click & Collect service.
Shop from a wide range of products and brands at least 12 hours before your flight, pay online and collect your shopping from the dedicated counters. It's that easy!



Full of surprises.

*Terms and conditions apply.



Road Test

2024 Cadillac XT4

Elevates the Drive with Luxury and Tech Additions

40



Road Test

2024 Nissan Z NISMO

Amplifying the sports car experience

44



Road Test

2024 MERCEDES-AMG C 63 PERFORMANCE

The Dawn of a New Era

48



Tech Highlight

2024 BMW X5

Slim Headlights, Illuminated BMW Kidney Grille

52

Publisher
Hares Fayad

Editor in Chief
Myles Mellor

Contributing Writers
Andrew Ling
Benjamin Yong
Sonia Akraa

Editor
Alex B. G.

Sub-Editor
Boutros C. Michael

Art Director
Moath Massad

Photographers
Andrew Ling
Benjamin Yong
Sami Abed



www.carbookmagazine.com

Offices
(U.A.E.), Dubai
Jumeirah Lakes Towers,
JBC 2
P.O. Box: 50324
T.: +971 4 457 2348
F.: +971 4 457 2126

For Inquiries
Editorials, Advertisements
M.: +971 55 302 5550
+971 50 653 4050,
hares@carbookmagazine.com
info@carbookmagazine.com

Lebanon, Beirut
P.O. Box 90 -1096
T. +961 1 513 121
F. +961 1 513 141

Publication of Al Badia

Agents Distribution

Lebanon: Al Nasheron Distribution Co. +9611277007 Qatar: Arabian Establishment for Commerce., +9745518898	UAE: Dar Al Hikma, +97142665394 London: General Co. for the distribution,+ 447818088777	Bahrain: Al Hilal Corporation, +97317480800 Muscat: United Agency for the media, +96892113295	Jeddah: Alkhazindar Co. +96626838025 Kuwait: United Distribution Co. +9652412820
--	--	--	---

Lebanon: 5,000 LL - UAE: 20 AED - KSA: 20 SAR - Kuwait: 1.25 KD - Oman: 1.5 OMR - Qatar: 1.5 QAR - Bahrain: 1.5 BHD - Morocco: 15 MAD - UK: 4 GBP - France: 4 EUR - Germany: 4 EUR



AUTHENTIC
& MAJESTIC

OUTLANDER



800 ALHABTOOR
254228667



AL HABTOOR MOTORS LAUNCHES

The newly redesigned flagship Mitsubishi showroom in Deira

The newly renovated Mitsubishi Motors Showroom inaugurated, in the presence of Mr. Ahmed Khalaf Al Habtoor, CEO, Al Habtoor Motors and Mr. Masatsugu Kurahashi, Division General Manager, Europe & Middle East / Africa / South Asia Division, Mitsubishi Motors Corporation.



Al Habtoor Motors, the exclusive distributor of Mitsubishi in the UAE, has opened its newly redesigned main showroom in Deira. As the oldest showroom in its network, this launch marks a significant milestone in Al Habtoor Motors' journey of excellence. Following the recent major renovation and successful launch of the Sheikh Zayed Road

branch, this flagship Deira showroom is in line with Mitsubishi Motors Corporation's (MMC) Dealer Visual Identity Program.

Designed to reflect MMC's Dealer Visual Identity Program, the Deira showroom features a captivating 'Dynamic Slope' that creates a powerful, dynamic image,

bringing customers closer to the Mitsubishi brand. The primary color palette consists of black and grey with striking red accents, enhancing the showroom's visual appeal.

Spanning across 1168.4 square meters, the Deira showroom boasts two floors, with the ground floor seamlessly connected to



Ahmed Khalaf Al Habtoor, CEO, Al Habtoor Motors and **Masatsugu Kurahashi**, Division General Manager, Europe & Middle East / Africa / South Asia Division, Mitsubishi Motors Corporation.





the head office. Manned by an experienced and well-trained 11-member sales team, the showroom offers a high-end retail environment to ensure exceptional customer service.

Equipped with state-of-the-art technology and digital tools, the showroom includes the Negotiation TVs that serve as discussion booths, facilitating a seamless and enjoyable customer experience. Located in the heart of Deira, adjacent to two bustling main roads, the showroom provides easy access to customers residing in Sharjah and Dubai. The welcoming reception area features a comfortable lounge and a convenient coffee counter, prioritizing customer satisfaction.

The highlight feature of the showroom is the high visibility of the vehicle display area, complemented by a designated space for showcasing the hero car. Additionally, the showroom houses a dedicated Genuine Parts department and a separate accessories section, ensuring customer convenience.

In terms of customer services, the showroom offers easy access to finance and insurance companies, as well as RTA Department, onsite, for immediate vehicle registration. Furthermore, a dedicated delivery area is available for customers to take delivery of their vehicles.

Aligned with Mitsubishi Motors Corporation's (MMC) new corporate brand, centered around the tagline "Drive Your Ambition," the Dealer Visual Identity Program aims to establish a consistent and unified brand identity across all customer touchpoints.

"We are proud to announce the opening of our brand-new showroom in the heart of the city!" said Mr. Karim Adnan Maksoud, Managing Director of Al Habtoor Motors. "The revamped flagship Mitsubishi Showroom in Deira, featuring the signature 'Dynamic Slope,' exudes a strong and energetic image. We have designed the showroom to provide an unbeatable

customer experience and ensure that our cars shine as the stars of the showroom."

The prestigious inauguration of the showroom was led by Mr. Ahmed Khalaf Al Habtoor, CEO of Al Habtoor Motors, and Mr. Masatsugu Kurahashi, Division General Manager, Europe & Middle East/ Africa/South Asia Division, MMC. The event witnessed the presence of Mr. Yutaka Yano, President, Mitsubishi Motors Middle East and Africa.

About Al Habtoor Motors

Al Habtoor Motors is the exclusive distributor of Mitsubishi, FUSO, JAC, Bentley, Bugatti, and Pagani in the UAE. It is a part of the Al Habtoor Group, a diversified multi-billion-dirham business conglomerate based in the UAE. The Al Habtoor Group has extensive interests and substantial investments across various sectors, including engineering, real estate, hotels, leasing, education, publication, and automobiles.

AL HABTOOR MOTORS LAUNCHES The newly redesigned flagship Mitsubishi showroom in Deira



FERRARI 296 GTS

Presented by Al Tayer Motors



the UAE's official Ferrari importer, the 296 GTS flanks the 296 GTB in redefining the whole concept of fun behind the wheel, guaranteeing pure emotions not just when pushing the car to its limits, but also in day-to-day driving situations.

The 296 GTS uses the new 663 cv 120° V6, coupled with an electric motor capable of delivering a further 122 kW (167 cv), which debuted on the 296 GTB. This is the first 6-cylinder engine installed on a road-going spider sporting the Prancing Horse badge; it unleashes its class-leading 830 cv total power output to deliver previously unthinkable performance levels and an innovative,

exhilarating and unique soundtrack, further enhanced by the fact that it can be relished with the top down.

The car's name combines its total displacement (2992 l) and number of cylinders with the GTS (Gran Turismo Spider) acronym in finest Ferrari tradition, to underscore this new engine's epoch-changing importance to Maranello. It is not simply the living, beating heart of the 296 GTS, but it also ushers in a new V6 era that has its roots deep in Ferrari's unrivalled 75-year history.

The very first Ferrari V6 featured a 65°

architecture and debuted on the 1957 1500 cc Dino 156 F2 single-seater. This was followed in 1958 by larger displacement versions on the front-engined sports prototypes - the 196 S and 296 S - and the 246 F1 car which powered Mike Hawthorn to the F1 Drivers' Championship title the same year.

The 296 GTS's plug-in hybrid (PHEV) system guarantees it is an incredibly usable car as well as cutting pedal response times to zero and delivering a 25km range in all-electric eDrive mode. The car's compact dimensions and the introduction of innovative dynamic control systems as well

LUKOIL
LUBRICANTS

A COMPLETE RANGE OF AUTOMOTIVE LUBRICANTS FOR ALL YOUR FLEET REQUIREMENTS

PASSENGER CAR ENGINE OILS • COMMERCIAL VEHICLE ENGINE OILS
TRANSMISSION OILS • BRAKE FLUIDS • COOLANTS • GREASES



With a global presence in more than 125 countries, LUKOIL is among the world's top ten lubricant manufacturers.

Designed for a variety of operating conditions across passenger vehicles, commercial vehicles and industrial applications, our range of LUKOIL lubricants exceed international standards across multiple parameters. It's no wonder they are the preferred choice of most OEMs.

Switch to LUKOIL. Because your engine deserves nothing less.

www.lukoil-lubricants.com



as meticulously honed aero ensure that the driver will instantly be impressed by its astonishing agility and responsiveness to commands. Its sporty, sinuous design and extremely compact dimensions also visually underscore its unique and modern forms, while skilfully referencing the likes of the 1963 250 LM, the perfect marriage of simplicity and functionality.

The RHT (retractable hard top) guarantees exceptional occupant comfort. With the roof stowed it features a sleek, sporty design and with the roof up, the silhouette remains very similar to that of the 296 GTB. The lightweight RHT takes a mere 14 seconds to retract or deploy at speeds of up to 45km/h.

The separation line between the car's body and the roof is above the B post. As a result, the folding roof splits into two sections that fold flush over the front of the engine, thus maintaining the engine bay's thermal dissipation characteristics and the balance of the overall design. This also allowed the designers to introduce a window in the rear section of the engine cover through which the new V6 is clearly visible. When the top is retracted, the cabin and the rear deck are separated by a height-adjustable glass rear screen which guarantees optimal passenger comfort even at high speeds.

As was the case with the SF90 Stradale, for clients who want to exploit the car's extreme power and performance to the utmost,

particularly on the track, the 296 GTS is also available with the Assetto Fiorano package, which includes lightweight features and aero modifications.

7-YEAR GENUINE MAINTENANCE

Ferrari's unparalleled quality standards and increasing focus on client service underpin the extended seven-year maintenance programme offered with the 296 GTS. Available across the entire range, the latter covers all regular maintenance for the first seven years or 120,000 km of the car's life. This scheduled maintenance programme for Ferraris is an exclusive service that allows clients the certainty that their car is being







kept at peak performance and safety over the years. This very special service is also available to owners of pre-owned Ferraris.

Regular maintenance (at intervals of either 20,000 km or once a year with no mileage restrictions), original spares and meticulous

checks by staff trained directly at the Ferrari Training Centre in Maranello using the most modern diagnostic tools are just some of the advantages of the 7-Year Genuine Maintenance Programme. The service is available on all markets worldwide and from all Dealerships in the Official Dealership

Network.

The 7-Year Genuine Maintenance programme further extends the wide range of after-sales services offered by Ferrari to meet the needs of clients wishing to preserve the performance and excellence that are the signatures of all cars built in Maranello.



ORANGE AUTO

LUXURY CAR SERVICE & REPAIR

BODY SHOP | ELECTRICAL | MECHANICAL | RIM REPAIR



Mobil 1

+971 4 3491551

www.orangeauto.ae

GRAND UNVEILING OF AL HABTOOR MOTORS' STATE-OF-THE-ART

JAC Showroom on Sheikh Zayed Road



Mr. Khalaf Al Habtoor, Mohamed Al Habtoor and Ahmed Al Habtoor

Marking a moment of pride, Al Habtoor Motors LLC, the exclusive distributor of JAC vehicles in the UAE, introduced its state-of-the-art showroom along the renowned Sheikh Zayed Road. The showroom's concept, design, and decoration were meticulously curated to pay homage to the history of JAC and its remarkable journey. The grand opening event was a momentous occasion, with Mr. Khalaf Al Habtoor, Chairman of Al Habtoor Group, and Mr. Sultan Al Habtoor, President of Al Habtoor Motors, gracing the event. With a sense of unity and shared purpose, Mr. Khalaf and Mr. Sultan together, officially inaugurated the showroom, marking the

beginning of a new era for automotive excellence and innovation.

Spanning an impressive 1800.10 square meters, the showroom was not just a space but a living embodiment of JAC's history. The brilliant amalgamation of muted Grey, White, and Black tones in line with JAC Motors Corporation's Dealer Visual Identity served as the canvas for the historical narrative. Each detail was thoughtfully incorporated to reflect the legacy of JAC, creating an atmosphere that resonated with visitors who appreciated the intertwining of history and modernity.

The showroom, ingeniously distributed across two meticulously designed floors, aimed at offering visitors a comprehensive experience that merged past, present, and future. The ground floor, a harmonious blend of museum-like ambiance and modern automotive aesthetics, housed 8 exquisite car displays, including the Hero Car, alongside a welcoming lounge area. The first floor, symbolizing progression, accommodated administrative and back-office spaces, embracing advanced technology to streamline operations. A team of 7 seasoned sales staff stood ready to provide personalized guidance, reflecting the brand's commitment to attentive service.



Mr. Khalaf Al Habtoor, Sultan Al Habtoor, Mohamed Al Habtoor & Ahmed Al Habtoor

"JAC Motors' journey has been a testament to growth, innovation, and determination. We're honored to bring our legacy to the UAE with partners who share our vision", stated Mr. Karim Maksoud, Managing Director of JAC Motors. "Our vehicles are not only a representation of cutting-edge technology but also proudly made in China. This showroom is a reflection of our passion and dedication to redefine the automotive experience", he added.

Strategically situated with convenient access to the Al Quoz industrial area, Oasis Mall, and the Metro Station, the location further added to the overall allure of the showroom. A dedicated team of assistants catered to the delivery area, ensuring that the experience of receiving a new JAC vehicle was seamless and joyous. Customers also enjoyed the benefit of free delivery to the largest Service Center in Dubai Investment Park (DIP), reinforcing the brand's commitment to exceptional service.

As the grand opening event reached its crescendo, the spotlight was on the unveiling of the eagerly anticipated JAC E30X. This innovative electric car was not only a testament to JAC's dedication to sustainability but also a link between history and the promise of a more environmentally conscious future.

Intriguing, innovative, and inspirational, the new JAC showroom on Sheikh Zayed Road promised not just driving experiences, but a journey through time. This celebration of history and progress redefined automotive retail, presenting a world where luxury, technology, and a rich legacy converged seamlessly.

About JAC Motors: Officially recognized as Jianghuai Automobile Co Ltd, JAC Motors stands as the premier Commercial Vehicle Brand in China, catering to a global market of over 100 countries with its passenger and commercial vehicles. Notably, JAC holds

the coveted No. 1 position among Chinese auto brands in Brazil, and ranks as the No. 2 choice for exported brands. Presently, JAC Motors boasts an extensive network of more than 500 dealerships and operates 14 assembly plants in over 50 countries, spanning across regions such as Latin America, Europe, Africa, the Middle East, Asia, South Asia, and Southeast Asia.

About Al Habtoor Motors: Al Habtoor Motors takes pride in its role as the exclusive distributor of distinguished automotive brands in the UAE, including Mitsubishi, FUSO, JAC, Bentley, Bugatti, and Pagani. A cornerstone of the UAE-based diversified multi-billion-dirham business conglomerate Al Habtoor Group, Al Habtoor Motors contributes to the group's diverse portfolio. The expansive interests of the Al Habtoor Group span various sectors, including Engineering, Real Estate, Hotels, Leasing, Education, Publication, and Automobiles



*FASHION AT YOUR
DOORSTEP*

SHOP **ONLINE** NOW! 

**15% OFF
YOUR FIRST
ORDER!**

QUICK FREE DELIVERY & RETURNS WITHIN UAE*

2024 ROLLS-ROYCE SPECTRE

The Marque's First Fully-Electric Motor Car



In 1900, Rolls-Royce co-founder, Charles Rolls, prophesied an electric future for the motor car. Having acquired an electric vehicle named The Columbia Electric Carriage, he foresaw its suitability as a clean, noiseless alternative to the internal combustion engine – providing there was sufficient infrastructure to support it. Today, more than 120 years later, the time has come for Rolls-Royce Motor Cars to fulfil the prophecy of its founding father.

This prophecy could not have been fulfilled without a more recent promise, when Rolls-Royce CEO, Torsten Müller-Ötvös, made a public commitment to electrification by announcing that he would bring a fully-electric Rolls-Royce to market within the current decade. Charles Rolls' prophecy and Torsten Müller-Ötvös' promise led to an historic moment. In September 2021, the marque confirmed that it had commenced testing of Spectre, the first Rolls-Royce to be conceived and engineered from the very

beginning as an electric car. To ensure that this transformative motor car was sufficiently prepared for the most demanding consumer in the world – the Rolls-Royce client – the marque devised the most exhaustive testing programme it had ever conceived. Spectre is being subjected to a journey of more than 2.5 million kilometres, simulating more than 400 years of use for a Rolls-Royce. On its completion in 2023, Spectre will represent a prophecy fulfilled, a promise kept and an undertaking completed. Spectre is not only an historic moment for Rolls-Royce, but also an historic moment for electrification – with Spectre, the marque confirms that the technology has reached a standard that can contain the Rolls-Royce experience. To that end, Rolls-Royce has confirmed that by the end of 2030 its entire product portfolio will be fully-electric.

THE FUTURE BEGINS

Spectre is more than a motor car. It is a statement of intent and a symbol of a bright,

bold future as Rolls-Royce progresses into an all-electric era. This commitment to an all-electric powertrain will only enhance the Rolls-Royce experience – instant torque, silent running and the sense of one imperceptible gear have defined the characteristics of an extraordinary canon of products dating back to the very first Rolls-Royce, the 1904 10 H.P.

With Spectre, Rolls-Royce has harnessed a revolutionary 'Decentralised Intelligence' system that allows for the free and direct exchange of information between more than 1,000 vehicle functions, further elevating the marque's celebrated quality of ride. Its designers have captured a contemporary yet timeless aesthetic that significantly progresses the brand's iconography as it embarks on its electric age. Its craftspeople have created a suite of contemporary prêt-à-porter personalisation possibilities, including Starlight Doors and Illuminated Fascia, inspiring clients to realise their own Bespoke visions.





smoother in section and a flusher fit, designed to help guide the air around the motor car's front.

The relaxed angle and polished stainless steel finish of the grille does much to enhance Spectre's presence using environmental reflection. Along with an aero-tuned Spirit of Ecstasy figurine – itself the product of 830 combined hours of design modelling and wind tunnel testing – the grille enhances the motor car's unprecedented drag coefficient, which at just 0.25cd makes Spectre Rolls-Royce's most aerodynamic motor car, ever. This intelligent treatment has been married to the iconography of Spectre's spiritual predecessor, the Phantom Coupé. Spectre clearly acknowledges its forebear with its generous proportions and split headlight treatment – a contemporary Rolls-Royce design tenet. Spectre's sharp daylight running lights emphasise the motor car's imperious two-metre width and are offset with lower

lamp clusters that appear darkened, at first glance, but hide jewellery box-like darkened chromium housings for the headlights. To affirm Spectre's expression after dark, the grille is softly illuminated, with 22 LEDs lighting up the sandblasted rear side of each of the vanes, their gentle glow reflected in the polished front surfaces for a subtle and three-dimensional night signature.

In profile, the sharp, vertical bow line at the front of Spectre draws the eye rearward to its monolithic flanks. The lower line – known as the 'waft line' – borrows directly from yacht design. Instead of exaggerating movement with busy detailing or appliqué, Spectre's coachwork gently tucks into the sill, lightening the surfacing and creating an uncomplicated sense of motion by reflecting the road passing beneath it, much as the hull of a racing yacht reflects the ocean as it cuts through water. This 'waft line' is the visual representation of the 'magic carpet ride' and

its upwards sweep toward the front is inspired by the gently lifting bow of an accelerating power boat.

The silhouette's most dramatic feature is Spectre's fastback, which recalls the most evocative motor cars and watercraft in history. The seamlessness of the greenhouse surfacing significantly contributes to achieving the lowest drag coefficient ever for a Rolls-Royce. Following the roofline back, the tail lamps are set into the largest single body panel ever produced for a Rolls-Royce, which extends from the A-pillar to the luggage compartment. The jewel-like vertical tail lamps themselves are colourless for neutrality, in anticipation of the myriad of colourways selected by clients during the commissioning process. Their precision and reduced dimension complement the generous flow of the bodywork from the muscular shoulders backwards into the tail section with its characteristic tapering plan view.



LIVE THE SPORT OF KINGS



STABLES



POLO ACADEMY



RIDING SCHOOL



COMPETITIONS



TOURNAMENTS



EVENTS

A FIVE-STAR LUXURY AT THE HEART OF DUBAI.

Al Habtoor Polo Resort & Club is a state-of-the-art polo and equestrian community devoted to equine sports consisting of 122 villas for lease, branded luxury homes, four polo fields, a riding school with show jumping and dressage arenas and 520 modern stables. The Habtoor Polo Resort, is the centrepiece of this upmarket resort offering 151 guest rooms, suites and villas exuding timeless Andalusian elegance within an oasis of excellence, luxury and impeccable service.

+971 (4) 436 2222 | info@alhabtoorpoloclub.com | www.alhabtoorpoloclub.com

[f](https://www.facebook.com/alhabtoorpoloresortandclub) @alhabtoorpoloresortandclub [ig](https://www.instagram.com/alhabtoorpoloresortandclub) @alhabtoorpoloresortandclub [tw](https://www.twitter.com/HabtoorPoloClub) @HabtoorPoloClub

2024 BENTLEY CONTINENTAL GT AZURE

Sets a New Standard for Effortless Comfort and Performance



Effortless performance and comfort over long distances have long been hallmarks of Bentley, which is now building on this reputation with a new Azure family available across all five model lines. The new Continental GT Azure prioritises the wellbeing and comfort of the vehicle's occupants, making every journey a relaxing experience regardless of distance.

The Continental GT Azure includes Bentley's 48V active anti-roll control system which enhances ride comfort and limits roll for smoother, more relaxing journeys. The system cushions the driver and passengers from excessive movement by electronically decoupling the anti-roll bars when appropriate to smooth the ride, then applying up to 1300 Nm of anti-roll torque in 0.3 seconds when cornering to keep the body flat and stable. Minimal body roll under hard cornering creates

a soft, compliant, and refined setup for relaxed driving. The system also works with the three-chamber air springs to provide a chassis that is both dynamically capable and exceptionally comfortable.

In addition, the interior design is tailored specifically to the modern luxury customer, with unrivalled attention to detail that creates an effortless ownership experience. The cabin seamlessly integrates cutting-edge onboard technology with the finest handcrafted natural materials and includes a standout feature of a fixed panoramic glass sunroof. The results, combined, are an exquisite, harmonised, connected, and luxurious space, built with your wellbeing in mind.

The Continental GT Azure does not compromise, however. The muscular exterior design, created using revolutionary

technology, results in a lightweight, yet stiff, body. The engine is positioned further back to improve weight distribution, resulting in a driver-focused, dynamic performance. The powertrain mounting system complements the chassis as it is optimised to deliver the best balance between ride comfort, vehicle dynamics and powertrain NVH, or Noise, Vibration and Harshness.

Where once a vehicle acoustic engineer would have focused on the suppression of NVH (areas of refinement in which Bentley cars have always led the field) the focus in the Azure suite is as much now on the quality of sound. Escaping the outside world into a personalised environment, with less outside noise, that could otherwise reduce attention, impact memory, and increase stress response, is now a priority in the Continental GT Azure suite.



ASTON MARTIN DB12

The world's first Super Tourer



Aston Martin is proud to introduce the new DB12. Delivering a quantum shift in sporting character and dynamic capability, this new generation of the legendary DB bloodline defines its own new category. Combining a scintillating driving experience with exceptional refinement, state-of-the-art technology and indulgent luxury, the DB12 demands a new definition. Grand is not enough; this is the world's first Super Tourer.

The DB12 takes a new direction. One which makes it the most complete and accomplished DB model in Aston Martin's history. Blessed with exceptional performance and handling to satisfy and reward the most demanding drivers, its meticulously honed chassis is perfectly matched to a class-leading 680PS/800NM V8 Twin-Turbo powertrain. The result

is an energised Aston Martin that shines with authenticity, capability and passion to deliver a driving experience that's second to none.

Engineered to maximise performance and intensify emotion, the DB12 is the product of a holistic approach. One that starts with meaningful increases in structural stiffness and ends with Michelin Pilot Sport 5 S tyres made to Aston Martin's precise specification. Supported by an all-new suspension system featuring the latest adaptive dampers, control and connection are further amplified by an exceptionally precise and direct Electronic Power Assisted Steering (EPAS) system and an Electronic Rear Differential (E-Diff) that enhances agility and brings the DB12 alive on the most dynamic of roads.

Supported by an industry leading Electronic Stability Control (ESC) system, which employs six-axis inertia measurement to predict available grip, the DB12 also gives the driver a choice of five pre-set driving modes allowing the freedom to incrementally explore the limits of grip and traction with complete confidence and safety. Put simply, no series production Aston Martin has dedicated itself so completely to setting new dynamic benchmarks.

The announcement of DB12 comes as Aston Martin celebrates two significant milestones in 2023; Its monumental 110th anniversary and 75 years of the illustrious DB model line. When founders Lionel Martin and Robert Bamford officially formed the partnership that became Aston Martin, they ignited more than a century of automotive passion, cutting-





edge British innovation, and high-octane racing success. It comes at a time when Aston Martin is enjoying one of the most dynamic periods in its 110-year history thanks to continued podium success in the 2023 Formula 1® season. Competing at the pinnacle of world motorsport remains a key pillar of the marque’s brand and product strategy.

DB12’s core values of high-performance and ultra-luxury are spearheading Aston Martin’s next generation of sports cars. As such it heralds a new era. One which will see all Aston Martin models characterised by prodigious performance and pinpoint dynamics, seamless integration of advanced technologies and the sublime style and exemplary craftsmanship for which the brand has long been renowned.

Roberto Fedeli, Group Chief Technology Officer of Aston Martin said of the new DB12: “DB12 is a statement car. One that asserts Aston Martin’s position as a leader in performance, dynamics, engineering and technology. We have pushed every aspect of this car to be best-in-class. The result is more power and performance than its rivals. Combined with exceptional handling and an exciting soundtrack, it is a car with passion and a truly sporting character. Crucially, thanks to its breadth of capability we have achieved this without compromising refinement, comfort and luxury. Together with our use of industry-leading dynamic control and infotainment systems, DB12 is the start of Aston Martin’s most exciting new era.”

Performance – fiercer, newfound engagement from class-leading powertrain

Unapologetic and unambiguous, DB12 makes an emphatic statement. One that exudes the confidence of a car endowed with a 0-60mph time of 3.5 seconds, a 202mph top speed and best-in-class potency from its 4.0 Twin-Turbo V8 engine. This exceptional hand-built engine, tuned by Aston Martin engineers to deliver class-leading 680PS/671bhp at 6000rpm and 800Nm/590lb ft between 2750-6000rpm; an increase of 34% compared with the outgoing DB11.

These higher outputs have been achieved through modified cam profiles, optimised compression ratios, larger diameter turbochargers, and increased cooling.

To manage increased thermal demands the cooling system has been completely redesigned, with an additional two auxiliary coolers added to the existing central main radiator. To ensure desired engine intake air temperatures are achieved in all conditions, an additional low temperature radiator has been fitted to the charge cooler water circuit.

In addition, the auxiliary outboard engine oil cooler now has over double the face area of its predecessor in order to manage the demands on the lubrication circuit. Cooling has been optimised further by improving thermal airflow, a 56% increase in open apertures allowing more cold air to flow into the radiators, while centrally mounted bonnet vents placed above the twin turbos allow hot air to escape.

Handling and dynamics – the sharpest DB ever

Power is fed through an 8-speed automatic transmission and for the first time on an Aston Martin DB model, Electronic Rear Differential (E-Diff). This differential is linked to the car’s Electronic Stability Control (ESC) system. Unlike a conventional Limited Slip Differential, it can go from fully open to 100% locked in a matter of milliseconds, giving the driver maximum response for more precise and consistent handling.

Working in harmony with the latest generation ESC system the E-Diff significantly improves the car’s cornering capabilities in all conditions. In low to medium speed corners, the DB12 feels brilliantly agile and responsive, coming alive on challenging roads thanks to immense front-end grip and tremendous traction. Meanwhile, total composure in high-speed corners lends the DB12 to a great feeling of confidence and control.

To increase driver engagement and amplify the intensity of its performance, the DB12 features a revised (shortened) Final Drive Ratio (3.083:1), plus a

unique transmission shift calibration. The former works to deliver punchier in-gear acceleration, while the latter reduces shift speeds and creates different shift characteristics to suit the DB12’s broad range of dynamic modes.

DB12’s bonded aluminium structure has seen a 7% increase in global tortional stiffness thanks to changes to a range of underbody components; the engine cross brace; front and rear undertrays; front crossmember and rear bulkhead. The combined effect is a focused improvement in tortional rigidity and lateral stiffness – especially between the front and rear strut towers – which provides a stronger and more stable attachment points for the dampers and rear axle. This brings gains in suspension performance, isolation and refinement, along with improvements in on and off-centre steering feel and overall sense of driver connection.

With the introduction of new generation intelligent adaptive dampers and extensive engineering of key components such as stiffer anti-roll bars, DB12 offers class-leading driving dynamics and greatly increased breadth of capability.

With a 500% increase in bandwidth of force distribution, these state-of-the-art dampers are a huge advance as their greater capacity facilitate a far broader range of control and refinement across the DB12’s drive mode settings. By exploiting this increased scope, Aston Martin’s vehicle attributes engineers have extended the DB12’s range of character far beyond those of class rivals.

Careful calibration of the dampers allows the progressive introduction of more response and tighter body control as you scroll through the dynamic modes, with detailed tuning of suspension bushing delivering excellent refinement and isolation. Combined with the E-Diff and ESC system this means that in GT mode a luxurious ride quality is retained for

sublime yet agile cruising, while Sport and Sport+ modes ramp-up the DB12’s responsiveness and tighten body control, shrinking the car around the driver and making it truly come alive on challenging roads as never before.

As the primary point of contact between car and driver, careful attention has been paid to perfecting the DB12’s Electronic Power Assisted Steering system (EPAS). This begins with the fitment of a non-isolated steering column, which gives an enhanced dynamic feel by ensuring steering inputs from the driver and feedback from the road remain pure and uncorrupted.

EPAS calibration focuses on ensuring plenty of on-centre feel mated to a swift but natural-feeling rate of response. Taking care to avoid the steering responding in an exaggerated, overly aggressive manner, DB12 has an intuitive, confidence-inspiring feel. One that that allows the driver to relax on long journeys but revel in its precision, responsiveness and agility when attacking an apex.

In the interests of consistency and driver connection, the EPAS has a constant 13.09:1 ratio rack with variable, speed sensitive assistance and 2.4 turns lock-to-lock. This variable level of assistance is integrated with the DB12’s drive mode programmes, the level of assistance reducing incrementally while moving towards the most aggressive mode (Sport+).

Ensuring it has the stopping power to match its prodigious pace, DB12 is fitted as standard with cast-iron 400mm front discs and 360mm rear discs with grooved and drilled faces for improved thermal capacity. The brake booster has also been re-tuned to improve pedal feedback, giving the driver greater confidence thanks to a firm pedal with an immediate sense of stopping power combined with progressive response.

2024 LEXUS UX 250H

Super Luxury Crossover



The UX 250h carries over its dynamic drive and various luxury options into the new 2024 model year. An available power back door with kick sensor is now available across all models.

Only offered with a hybrid powertrain in the U.S., the 2024 UX 250h supports Lexus’ work towards the realization of a carbon-neutral society. Powered by the fourth-generation Lexus Hybrid Drive powertrain, the vehicle boasts 181 total system horsepower and a 17.1-foot turning radius. The hybrid system combines

a 2.0-liter four-cylinder gasoline engine with two electric motor/generators in a hybrid transaxle and is available in both front-wheel and all-wheel drive configurations.

Exterior Design and Aerodynamics

The 2024 Lexus UXh features the Lexus spindle grille, featuring a block-shape mesh pattern with individual elements gradually changing in shape as they radiate out from the central Lexus emblem. The headlamp design completes the UXh’s face with LED daytime running lights arranged in an arrowhead

Mica 2.02 and Cadmium Orange2.

Standard on all UXh models are 18-inch run-flat tires. Five-spoke alloy wheels with a dark gray and machined finish are found on Base and Premium models while F SPORT models are highlighted by split-five-spoke alloy wheels. Additionally, two other wheel options are available including one in a gloss black and machined finish and another in matte black.

A Solid Structure To Build On
Lexus instilled the UXh with an outstanding



this design also reduces turbulence and lift, benefiting vehicle stability when cornering and driving in crosswinds. A wing-type spoiler at the rear edge of the roof, along with a flat underbody, contribute to vehicle quietness, fuel efficiency and aerodynamics. The 2024 UXh is available in exterior colors including: Caviar, Obsidian, Redline, Nori Green Pearl, Grecian Water, Cloudburst Gray1, Iridium1, Eminent White Pearl1 and Cadmium Orange2. F SPORT models include six color options paired with an Obsidian roof: Redline, Cloudburst Gray1, Iridium1, Ultra White1, Ultrasonic Blue

aerodynamic profile, large wheels pushed to the corners, and an impressive front fascia create the agile, sporty stance.

The wheel arch moldings protect the body from flying gravel off the tires and channel airflow over their edges to reduce turbulence and lift, contributing to the vehicle’s stability.

A similar contribution is made by the rear combination lamps. Unique Aero Stabilizing Blade Lights begin at the top of the rear fenders and span the rear of the vehicle. By guiding airflow around the rear of the UXh,

motif above the headlights to complement the Lexus L-shaped lighting signature.

The full-width rear lights project a distinctive nighttime signature formed by a sequence of 120 LEDs tapering toward the center, measuring just 1/8” thin at its narrowest point.

The vehicle’s basic form flows out from the lines of the spindle grille to envelop the cabin. Crisp, prominent sculpted surfaces and dramatically flared front and rear fenders reflect the robust inspiration, while an

combination of handling agility and smooth, quiet ride comfort. Key to achieving this balance is building the UXh around the high-strength global architecture platform. Extensive use of high-tensile steel, high-strength adhesives and laser screw welding results in a highly rigid structure, an essential foundation for helping to achieve sporty handling and luxurious ride comfort.

By using aluminum for the side doors, fenders and hood and composite materials for the tailgate, the UXh has a low center of gravity at 23.4 inches. As a result, the UXh delivers a secure, agile feeling normally associated with lower sport hatches.

The MacPherson strut front suspension and trailing arm double wishbone type rear suspension, both mounted to sub-frames, are specially tuned to deliver a combination of agility and comfort. Carefully refined details such as the quality of the damper oil, oil seals and friction control in the shock absorbers help make a positive impact on ride quality.

Active Cornering Assist (ACA), a function integrated with Vehicle Stability Control (VSC), helps the vehicle trace the driver's desired line through a turn by applying some brake control on the inside wheels, suppressing the tendency to understeer. As a result, the UX drives through corners with greater precision while maintaining stability.

F SPORT Performance

The 2024 Lexus UXh is offered in eight different models, including F SPORT Design and F SPORT Handling. The UX 250h F SPORT Design and F SPORT Handling models both have F SPORT wheels, grille, dark roof rails, a black roof, power tilt-and-slide moonroof, rain-sensing windshield wipers, fog and cornering lamps, automatic headlamp leveling and painted wheel arch molding.

Building on F SPORT Design, the F SPORT Handling model adds an Active Variable Suspension (AVS) for sharpened handling, stability and to improve overall ride comfort.



mavi



ABU DHABI MALL

 maviUAE www.mavi.com

Inside the F SPORT Handling, the UXh also receives an aluminum footrest and scuff plate in addition to F SPORT-exclusive sports seats, steering wheel, shift knob, meters and aluminum sports pedals.

Driver-Focused Interior

Inside the 2024 Lexus UX 250h, essential vehicle functions are grouped around the driver's side of the cabin allowing the driver to maintain a comfortable and natural feel while staying more in touch with the road. This space is highlighted by an available color head-up display in the driver's field of view, giving easy access to essential information such as a speedometer and shift position, and other information including navigational directions and the information displayed during the use of Dynamic Radar Cruise Control, Lane Tracing Assist and Road Sign Assist. Standard Lexus Interface with a touchscreen display also enables easy

operation for both driver and passenger.

Lexus designed the UXh cabin to evoke the feel of a luxury sedan, but with the higher seating position and versatility experienced in a crossover. Entering and exiting the UXh is made easier through optimal placement of the hip-point and unique shaping of the seat cushion. The human-centered approach shows clearly in the instrument panel's low, unobtrusive design and the slim A-pillar moldings, which are shaped to help improve visibility.

Ready to handle all device charging needs, the UXh is equipped with five USB ports in the cabin. Up front, two USB Type-C ports are located on the lower instrument panel with the available wireless charger just beneath. A USB Type-A port is also available inside the center console. For second-row passengers, two Type-C USB ports are located at the

bottom rear of the center console.

The UXh offers 8-way power adjustable front seats, with adjustable lumbar support for the driver, as well as manual forward/backward adjustment for the headrests. The UX 250h Premium model has standard heated and ventilated front seats, power tilt-and-slide moonroof, rain-sensing windshield wipers and an auto-dimming rearview mirror.

NuLuxe®-trimmed seating is offered in a choice of colors, including Black, Palomino and Birch. In addition to Black and Birch, F SPORT Design offers a NuLuxe® Birch with Lapis seat color while F SPORT Handling offers an exclusive seat in Black and Circuit Red. The dash trim finish is inspired by the grain of Japanese paper, known as washi. It's common in traditional Japanese homes and evokes a calm and warm feeling.



2024 Cadillac XT4

Elevates the Drive with Luxury and Tech Additions



Cadillac introduces the 2024 XT4 — a bold, modern take on the compact luxury SUV brimming with curated design updates and an extensive suite of technology and safety features.

“The XT4 continues to be a top-selling vehicle in its class, year over year,” said Rory Harvey, Global Cadillac Vice President. “Its balance of dynamic style, drivability and luxury has made it a favorite for many new Cadillac customers. Now with enhancements including our 33-inch-diagonal LED Color Touchscreen Display and new safety features, it will further demand a second look.”

Luxury and design take precedence from the inside and out

A more distinguished, contemporary pose is struck with the 2024 Cadillac XT4 with a

new exterior appearance as well as a revamped interior.

“The 2024 XT4’s exterior styling — with signature vertical lighting cues and enhancements — advances Cadillac’s design standard,” said Bryan Nesbitt, executive director, Global Cadillac. “Complemented with a redesign of the interior instrument panel, fashionable embroidery patterns on the seating and a feeling of front row spaciousness — the new XT4 is distinctive and audacious.”

On the exterior, the XT4’s all new front fascia features the unmistakable Cadillac vertical signature lighting which now integrates sleek refreshed headlamps and daytime running lights. The XT4’s new grille is a fresh reinterpretation of the classic Cadillac chevron embedded in a highly dynamic parametric

pattern and crafted with ultra-precision.

Each cell of the grille is unique in shape, size and curvature and dipped in deep black gloss. The Premium Luxury trim has an exclusive grille, wheels, fascia, roof rails and side body accents, where the Sport has its own exclusive fascia, wheels, body-side dark accents and dark finish roof rails.

There’s also a new lineup of 18- and 20-inch alloy wheel designs across the portfolio, as well as three new exterior colors³: Emerald Lake Metallic, Midnight Sky Metallic and Deep Sea Metallic.

Inside, the XT4 has a more tech-forward ambience with a redesign of the instrument panel that incorporates a bold, 33-inch-diagonal LED display inspired by the Cadillac





LYRIQ. It is the interface for a new, advanced Virtual Cockpit System that is the foundation for the vehicle's infotainment system and connectivity features.

The XT4's cabin also features authentic brushed aluminum décor across the full width of the newly styled instrument panel accented with contemporary embroidery patterns on

the seats.

Advanced user interface and next-gen connectivity

The XT4's new, expansive 33-inch-diagonal LED color touchscreen display is the focal point of the refreshed interior and the command center for its infotainment system⁴ and suite of advanced safety features.

This artfully integrated advanced display is capable of a stunning 9K resolution and curves toward the driver in a single continuous screen, spanning the driver's viewing area. It also incorporates a customizable user interface designed to offer a technology-forward and personalized experience, with selectable display themes that can be tailored for the user's mood or personality.

Proven performance and driving experience

What hasn't changed with XT4 is the proven performance and responsive driving experience on offer from Cadillac's 2.0L turbocharged engine (235 HP) with Active Fuel Management and an advanced nine-speed automatic transmission with electronic shift control. The Active Fuel Management system helps reduce fuel consumption¹¹ by

temporarily deactivating some of the engine's cylinders in certain driving conditions.

A Driver Mode Selector is also standard, allowing the driver to tailor the XT4's responses to different driving conditions. Tour, Sport and Snow/Ice modes are available on all trims. Active Sport Suspension also elevates ride and handling dynamics and is exclusively available

on XT4 Sport.

Additionally, the XT4's available twin-clutch all-wheel-drive system helps traction and vehicle control, whether the road is dry, wet, snowy, or icy. It is available on all trims and enhances performance by delivering torque to the wheels that need it the most.

2024 Nissan Z NISMO

Amplifying the sports car experience



- Z NISMO returns with 420 horsepower and significant handling enhancements
- NISMO-specific bodywork improves aerodynamic balance and style
- NISMO-enhanced brakes, suspension, body rigidity and more aggressive tires contribute to track performance

Dubai, UAE (03 August 2023) - The 2024 Nissan Z doubles down on thrilling performance with the return of Z NISMO, delivering an exhilarating track-ready experience for enthusiast drivers. The NISMO grade builds on the capabilities of the Nissan Z for those who seek more excitement and dynamic performance. Targeted enhancements amplify the precisely tuned Z to excite drivers

of all abilities.

The 2024 Nissan Z doubles down on thrilling performance with the return of Z NISMO, delivering an exhilarating track-ready experience for enthusiast drivers. The NISMO grade builds on the capabilities of the Nissan Z for those who seek more excitement and dynamic performance. Targeted enhancements amplify the precisely tuned Z to excite drivers of all abilities.

Z NISMO elevates the iconic sports car's performance with additional horsepower and torque, NISMO-tuned suspension and brakes, revised aerodynamic bodywork, stiffened suspension, and wider wheels with a more

aggressive tire compound.

Building on the equipment offered on the Nissan Z, interior enhancements include red-anodized engine-start and drive mode buttons, manual-adjust Recaro seats and a leather and Alcantara-wrapped steering wheel with a red marker at the 12 o'clock position.

Z NISMO design

Exterior revisions to Z NISMO were specifically engineered to improve aerodynamic performance on the racetrack. As a result of the changes, Z NISMO produces positive downforce.

The front of Z NISMO prominently features



a styling element called the “Grand-Nose” or “G-Nose,” which extends farther forward than on other grades and recalls a similar design treatment on the heritage Nissan Fairlady 240ZG.

The new front fascia also features a restyled grille opening with the thinnest honeycomb mesh of any Nissan production car. That mesh grille balances the need to reduce drag with permitting cool air to the engine bay. Canards at the car’s front corners create vortexes over the front wheels, further benefiting aerodynamic performance. A subtle red accent runs along the lower edge of the front fascia.

Complementing the G-Nose is a taller, wider rear spoiler with a three-piece design that extends onto the rear fenders. The rear bumper corners are reshaped to aid with air separation and reduced drag; their shape is inspired by that on GT-R NISMO. A red accent runs from the lower edges of the rear fascia and above the exhaust outlets. Z NISMO’s redesigned side sills also help reduce aerodynamic drag and lift.

Above the window line, Z NISMO further stands apart from other grades with a dark

metallic gray version of the car’s signature katana-blade styling element. Additionally, it has a black-painted roof and gloss black 19-inch RAYS® wheels.

Z NISMO’s bodywork is available in a choice of five colors: Black Diamond Pearl, Brilliant Silver, Passion Red TriCoat, Everest White Pearl TriCoat and NISMO-exclusive Stealth Grey.

Elevated interior

Nissan designers carefully enhanced the cabin of Z NISMO to amplify visual appeal without creating unnecessary visual “noise.” The engine start/stop and drive mode selection buttons are anodized red. The graphics in the fully digital TFT meter display feature a red outline around the tachometer, a NISMO logo and a special red “flash” during the start-up animation.

Helping to secure the driver and passenger in place are Recaro seats finished in a combination of leather and Alcantara, with a red center section and NISMO logos in the headrests. A new steering wheel features leather and Alcantara trim, with a sporty, racing-inspired red accent mark at the 12 o’clock position.

Targeted enhancements to twin-turbo engine

Z NISMO takes the twin-turbo engine’s power outputs up to 420 horsepower and 520 NM of torque. Peak torque is delivered from 2,000 through 5,200 rpm, ensuring drivers have strong performance across the rev range.

The engine’s horsepower enhancements were achieved through a combination of improved cooling, revised electronic wastegate control providing increased turbocharger boost and turbine speed, and an independent ignition spark timing strategy inspired by GT-R NISMO.

Z NISMO also features an enhanced engine oil cooler for extended track performance.

More dynamic shifting with Sport+ mode

Z NISMO exclusively uses a nine-speed automatic transmission that has been enhanced for faster and more dynamic shifting performance, with a particular focus on suitability for track use. Compared to the

transmission in other Z grades, it has revised clutch packs allowing for faster shifting. Along with revised engine management software, Z NISMO’s transmission has reduced downshift time by almost half. Launch control also delivers more aggressive standing-start acceleration.

In addition to Normal and Sport, Z NISMO adds a new Sport+ drive mode. This delivers a more dynamic, racetrack-tuned shift program for circuit driving, taking advantage of the powertrain’s faster downshift capability. The shift programming is designed to be so responsive for performance driving that a driver does not need to use the shift paddles on track – though fast-responding manual shifting is always available.

Enhanced suspension and tires

NISMO engineers revised every element of the car’s suspension to optimize precision, predictability and cornering grip. Z NISMO has unique stabilizer bars, a stiffer spring rate and larger, retuned dampers. The overarching tuning ethos was to deliver accurate, “one-

shot” steering that helps drivers to pick their line through a turn with a minimum of steering adjustment needed, contributing to confident track-ready performance.

To deliver maximum road feel and traction, Z NISMO wears Dunlop® SP SPORT MAXX GT600 tires, a version of which are also used on GT-R. The rear tires measure 10 millimeters wider.

The tires are fitted to lightweight, NISMO-specific, gloss black RAYS 19-inch wheels. Although the wheels are 0.5 inch wider than the 19-inch wheels on Nissan Z, their advanced construction means the NISMO-specific wheels are slightly lighter.

Stiffened chassis

Comprehensive chassis revisions to Z NISMO begin with bracing and stiffening measures that help the car faithfully track and respond to the increased cornering forces enabled by Z NISMO’s tires. Enhancements include additional front, rear and rear underfloor bracing, helping increase torsional rigidity by 2.5% compared to the standard grades. Stiffer front and rear suspension bushings, and a

stiffer mounting bushing for the steering rack, further increase lateral rigidity.

Track-enhanced brake system

Engineers enhanced the Z NISMO braking system, upgrading the front brakes to larger, 15.0-inch rotors matched to 13.8-inch rear brake rotors, and equipping a more performance-focused brake pad compound. The changes are intended to improve Z’s impressive brake pedal feel and enhance braking performance in extended track use scenarios.

2024 Nissan Z keeps sports car excitement alive

All 2024 Nissan Z models include a range of standard driver assistance and safety technologies, including Automatic Emergency Braking with Pedestrian Detection, Blind Spot Warning, Lane Departure Warning, Rear Cross Traffic Alert, High Beam Assist and Intelligent Forward Collision Warning.

For full details on the features included on each grade level, see the full specifications sheet.



2024 MERCEDES-AMG C 63 PERFORMANCE

The Dawn of a New Era



In 1900, Rolls-Royce co-founder, Charles Rolls, prophesied an electric future for the motor car. Having acquired an electric vehicle named The Columbia Electric Carriage, he foresaw its suitability as a clean, noiseless alternative to the internal combustion engine – providing there was sufficient infrastructure to support it. Today, more than 120 years later, the time has come for Rolls-Royce Motor Cars to fulfil the prophecy of its founding father.

This prophecy could not have been fulfilled without a more recent promise, when Rolls-Royce CEO, Torsten Müller-Ötvös, made a public commitment to electrification by announcing that he would bring a fully-electric Rolls-Royce to market within the current decade. Charles Rolls' prophecy and Torsten Müller-Ötvös' promise led to an historic moment. In September 2021, the marque confirmed that it had commenced

testing of Spectre, the first Rolls-Royce to be conceived and engineered from the very beginning as an electric car.

To ensure that this transformative motor car was sufficiently prepared for the most demanding consumer in the world – the Rolls-Royce client – the marque devised the most exhaustive testing programme it had ever conceived. Spectre is being subjected to a journey of more than 2.5 million kilometres, simulating more than 400 years of use for a Rolls-Royce. On its completion in 2023, Spectre will represent a prophecy fulfilled, a promise kept and an undertaking completed.

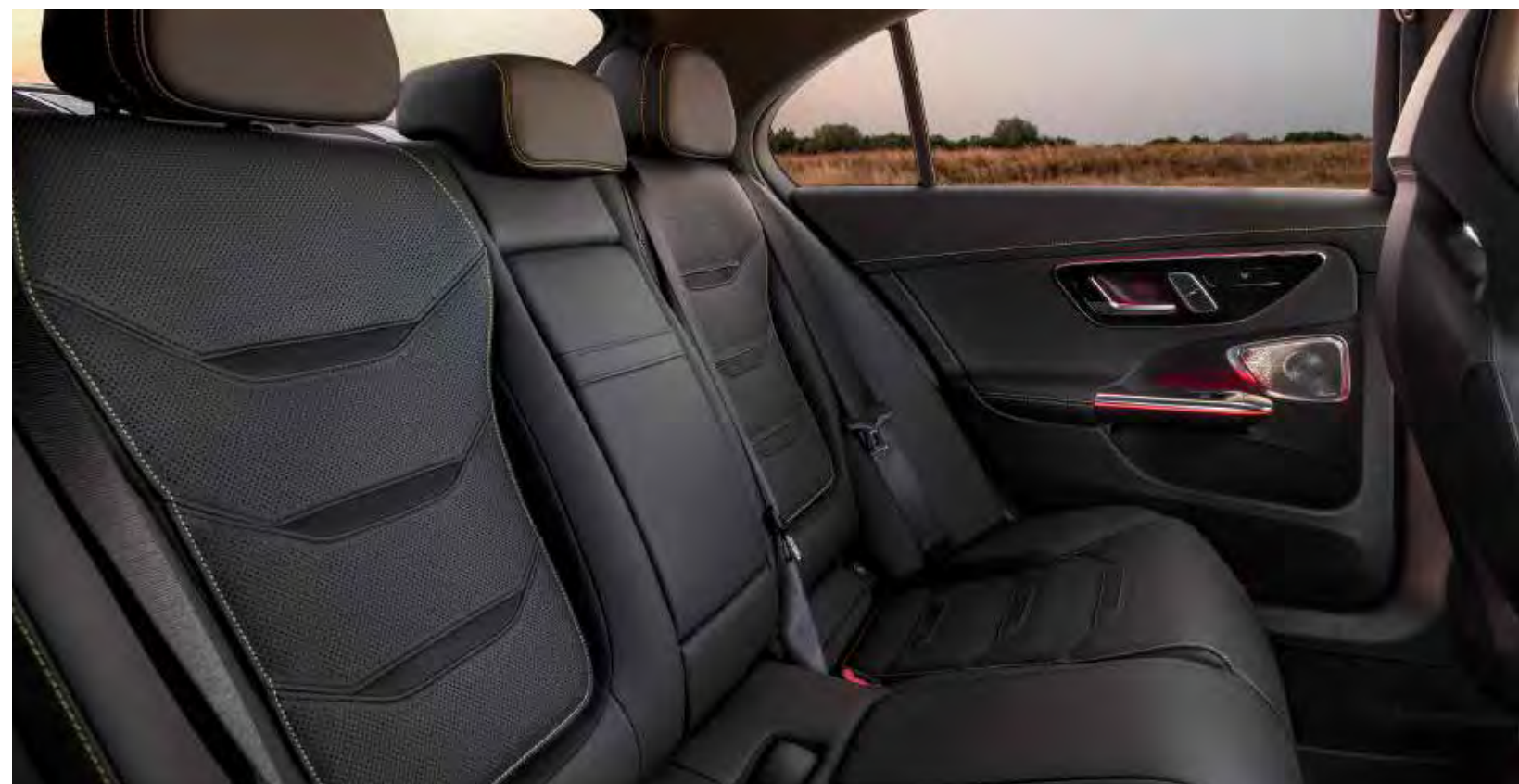
Spectre is not only an historic moment for Rolls-Royce, but also an historic moment for electrification – with Spectre, the marque confirms that the technology has reached a standard that can contain the Rolls-Royce experience. To that end, Rolls-Royce has

confirmed that by the end of 2030 its entire product portfolio will be fully-electric.

THE FUTURE BEGINS

Spectre is more than a motor car. It is a statement of intent and a symbol of a bright, bold future as Rolls-Royce progresses into an all-electric era. This commitment to an all-electric powertrain will only enhance the Rolls-Royce experience – instant torque, silent running and the sense of one imperceptible gear have defined the characteristics of an extraordinary canon of products dating back to the very first Rolls-Royce, the 1904 10 H.P.

With Spectre, Rolls-Royce has harnessed a revolutionary 'Decentralised Intelligence' system that allows for the free and direct exchange of information between more than 1,000 vehicle functions, further elevating the marque's celebrated quality of ride. Its designers have captured a contemporary





yet timeless aesthetic that significantly progresses the brand's iconography as it embarks on its electric age. Its craftspeople have created a suite of contemporary prêt-à-porter personalisation possibilities, including Starlight Doors and Illuminated Fascia, inspiring clients to realise their own Bespoke visions.

DESIGN

In unveiling Spectre, Rolls-Royce sets a new precedent in the creation of an entirely original class of motor car: the Ultra-Luxury Electric Super Coupé. This designation refers to Spectre's indulgent proportions, specified in response to a commitment that there is no greater luxury than that of space.

The marque's designers are deeply rooted in the context occupied by their motor cars. Therefore, their inspiration is drawn from worlds far beyond automotive, including haute couture, modernist sculpture, nautical design, tailoring and contemporary art. In conceiving the principal sketches for Spectre,

the marque's creatives were drawn to modern yacht concepts, specifically the clarity and precision of line, intelligent use of reflection and application of taper to emotionalise silhouettes.

From the front, Spectre's split headlight treatment is intersected by the widest grille ever bestowed on a Rolls-Royce. The vanes of the Pantheon grille are now smoother in section and a flusher fit, designed to help guide the air around the motor car's front.

The relaxed angle and polished stainless steel finish of the grille does much to enhance Spectre's presence using environmental reflection. Along with an aero-tuned Spirit of Ecstasy figurine – itself the product of 830 combined hours of design modelling and wind tunnel testing – the grille enhances the motor car's unprecedented drag coefficient, which at just 0.25cd makes Spectre Rolls-Royce's most aerodynamic motor car, ever.

This intelligent treatment has been married to the iconography of Spectre's spiritual

predecessor, the Phantom Coupé. Spectre clearly acknowledges its forebear with its generous proportions and split headlight treatment – a contemporary Rolls-Royce design tenet. Spectre's sharp daylight running lights emphasise the motor car's imperious two-metre width and are offset with lower lamp clusters that appear darkened, at first glance, but hide jewellery box-like darkened chromium housings for the headlights. To affirm Spectre's expression after dark, the grille is softly illuminated, with 22 LEDs lighting up the sandblasted rear side of each of the vanes, their gentle glow reflected in the polished front surfaces for a subtle and three-dimensional night signature.

In profile, the sharp, vertical bow line at the front of Spectre draws the eye rearward to its monolithic flanks. The lower line – known as the 'waft line' – borrows directly from yacht design. Instead of exaggerating movement with busy detailing or appliques, Spectre's coachwork gently tucks into the sill, lightening the surfacing and creating an uncomplicated sense of motion by reflecting



the road passing beneath it, much as the hull of a racing yacht reflects the ocean as it cuts through water. This 'waft line' is the visual representation of the 'magic carpet ride' and its upwards sweep toward the front is inspired by the gently lifting bow of an accelerating power boat.

The silhouette's most dramatic feature is

Spectre's fastback, which recalls the most evocative motor cars and watercraft in history. The seamlessness of the greenhouse surfacing significantly contributes to achieving the lowest drag coefficient ever for a Rolls-Royce. Following the roofline back, the tail lamps are set into the largest single body panel ever produced for a Rolls-Royce, which extends from the A-pillar to

the luggage compartment. The jewel-like vertical tail lamps themselves are colourless for neutrality, in anticipation of the myriad of colourways selected by clients during the commissioning process. Their precision and reduced dimension complement the generous flow of the bodywork from the muscular shoulders backwards into the tail section with its characteristic tapering plan view.

2024 BMW X5

Slim Headlights, Illuminated BMW Kidney Grille



The update will provide the BMW X5 with everything it needs to maintain worldwide market leadership in its segment and enable the BMW X6 to secure its position as number one ahead of competitors from other premium German manufacturers. The two models will be built at BMW Group Plant Spartanburg in the USA, the competence centre for BMW X models, and their global launch gets underway in April 2023.

The new BMW X5: slim headlights, illuminated BMW kidney grille.

The inclusion of the xLine design elements as standard gives the BMW X5 significantly greater presence and visual robustness. Its

front end is shaped by the fresh interpretation of the hallmark BMW headlights and kidney grille. The new headlight units now have a 35-millimetre slimmer outline. Their arrow-shaped daytime driving light elements point outwards and also serve as turn signal indicators. Matrix LED headlights with adaptive control and BMW Selective Beam non-dazzling high beam, plus M Shadowline lights, are included on the options list. The BMW kidney Iconic Glow is now offered as an option for the six-cylinder variants of the new BMW X5, and its cascade lighting creates an extremely eye-catching and brand-typical look. The vertical air curtains and the lower air intake, complete with decorative trim

detail in Pearl-effect Chrome and triangular apertures in its outer areas, also contribute to the cutting-edge aura. The precisely updated design of the BMW X5 also spans newly designed air breathers in the front side panels and the standard inclusion of Exterior Line Satin Aluminium trim and roof rails in Satin Aluminium. The sculptural fibre-optic light guide elements for the rear lights and brake lights now have particularly striking contouring. The L shape familiar from other BMW models is reflected horizontally, creating a consistently illuminated X motif within the rear lights.

AUDACITY WANTED.

WATCH MODEL: UNDERLINED



POLICE 40 YEARS

Available across all Police islands and leading retailers in UAE



he drive system for the plug-in hybrid variant of the SAV has also been completely reworked, and the updated model carries the designation BMW X5 xDrive50e. A latest-generation six-cylinder in-line petrol engine and a similarly new electric motor team up to develop system output of 360 kW/489 hp (including temporary boost effect) – an increase of 70 kW/96 hp over the outgoing model – and combined torque of 700 Nm (516 lb-ft), which is a rise of 100 Nm (74 lb-ft). The petrol engine's nominal output of 230 kW/313 hp represents an increase of 20 kW/27 hp on the unit it replaces. The compact electric motor integrated into the eight-speed Steptronic Sport transmission produces a nominal output of 145 kW/197 hp (+62 kW/84 hp). In addition, an innovative pre-gearing stage – used to increase the effective torque produced by the electric motor to a maximum 450 Nm (332 lb-ft) at the transmission input for the motor – helps to provide even sharper power delivery. The BMW X5 xDrive50e accelerates from rest to 100 km/h (62 mph) in 4.8 seconds. New V8 petrol engine with M TwinPower Turbo technology.

Credit for the elite sporting prowess of the two range-topping models goes to a new 4.4-litre V8 petrol engine, derived from the power units in high-performance models from BMW M GmbH. M TwinPower Turbo technology and a cross-bank exhaust manifold imbue the 390 kW/530 hp engine, which generates peak torque of 750 Nm (553 lb-ft), with impressively accomplished performance characteristics. The latest version of the eight-cylinder engine powers both the new BMW X5 M60i xDrive and new BMW X6 M60i xDrive from 0 to 100 km/h (62 mph) in 4.3 seconds.

Latest-generation six-cylinder in-line petrol engine.

Innovations affecting the combustion process, gas exchange, valve control, injection and ignition system mark out the latest-generation Six-cylinder in-line diesel engine with detail improvements. The six-cylinder in-line diesel engine in the new BMW X5 xDrive30d (fuel consumption, combined: 8.2 – 7.1 l/100 km [34.5 – 39.8 mpg imp]; CO2 emissions: 215 – 186 g/km in the WLTP cycle) and new

BMW X6 xDrive30d (fuel consumption, combined: 7.9 – 7.0 l/100 km [35.8 – 40.4 mpg imp]; CO2 emissions: 208 – 184 g/km in the WLTP cycle) also brings upgrades to numerous details. The 3.0-litre unit now has steel pistons instead of aluminium items, an optimised oil separation process and a new common-rail direct injection system with solenoid valve injectors.

Sophisticated chassis technology underpins sporting ability and long-distance comfort.

Fitting adaptive suspension as standard, modifying the anti-roll bars in response to changes in weight distribution and strengthening them accordingly gives the new BMW X5 and new BMW X6 their signature blend of sporting versatility and excellent long-distance comfort. Adaptive M suspension, which comes as standard on both the range-topping models as well as the other variants of the new BMW X6, provides a particularly firm connection to the body. Adaptive two-axle air suspension and the xOffroad package are offered as options.



BENTLEY

CUSTOMER MOBILE APPLICATIONS



YOUR PERSONAL ACCESS TO THE WORLD OF BENTLEY AND BEYOND

The Bentley Network is a convenient and unique app for your Apple or Android device that provides your own tailored access to Bentley, a world of digital services and an exclusive online community of Bentley owners.



DRIVER'S GUIDE APP NEW FOR CONTINENTAL GT

Now available for the Continental GT, Bentley owners can download the Driver's Guide App, which will allow them to access their Owner's Manual from their iPhone. The following features make it easier for owners to understand the features of the new

Continental GT:

- Topics are brought to life via interactive hotspots that, when tapped, show more information or imagery.
- A 'Useful Tips' section highlights common questions and topics, and has

been developed in consultation with our owners.

- Easy Navigation and search functionality - allowing you



MY BENTLEY PERSONALISED INFOTAINMENT AND NAVIGATION

This app permits owners to set destinations in the Bentley Navigation system through native phone functionality; Online Search, Contacts, Calendar, Pictures. The My

Bentley App also provides access to a variety of music, radio and spoken word through the nominated music services; Napster and Radio.net navigation.



TOUCH SCREEN REMOTE KEEP IN TOUCH AND STAY ENTERTAINED

Bentley passengers, front and back, have the luxury of controlling a selection of in-car systems from their mobile devices and now

their Apple Watch through the Touch Screen Remote App.

JAGUAR INCONTROL CONNECTIVITY

A Seamless in and out of Car Experience

For unrivalled connectivity within your car, Jaguar Connect and Connect Pro ensure you and your passengers enjoy a seamless in and out of car experience.



PRO SERVICES

Available as part of the Connect Pro package for Touch Pro, Pro Services are a range of unique connected navigation services.

- Avoid traffic congestion with live Real Time Traffic Information
- Navigate from the moment you step outside until you reach your destination with Door-to-Door Routing
- Find places of interest quickly and easily using Online Search from Lonely Planet and other popular travel guides
- See where you are going with photographic from Satellite and Street Level Imagery
- Automatically update contacts with your ETA using Share Estimated Time of Arrival

WI-FI HOTSPOT

Wi-Fi Hotspot delivers a 4G Wi-Fi hotspot in your Jaguar, enabling your passengers to connect up to 8 devices to the internet.*

Wi-Fi Hotspot is all about keeping you connected. It allows you and your passengers to connect to the internet via a powerful in-car 4G hotspot. This means that up to eight devices can be connected to keep in touch with work, life and entertainment while on the move.

The reliability of the internet connection is increased by connecting to the local 4G network through the Jaguar's powerful external antenna, in comparison to connecting via a smartphone.

You insert a data-only SIM card into the card reader in your Jaguar and turn on Wi-Fi Hotspot via the Touchscreen. A data signal is then provided by the local 4G mobile network via a roof-mounted antenna. This provides a stronger data connection as the 'blocking' effect traditionally associated with a car's metal structure is reduced.

Once the 4G hotspot is active, you can connect your smartphone or tablet to it using the device's connectivity functions.

INCONTROL APPS

InControl Apps presents a vehicle-optimised, interactive set of apps that enable media streaming, cloud- and location-based services and more - via the USB port



CERRUTI 1881



Porsche Elevates the Apple CarPlay User Experience:

A Seamless Fusion of Luxury and Technology



In a much-awaited move, Porsche has taken a giant leap forward in enhancing the user experience of Apple CarPlay integration in their vehicles. Recognizing the ever-increasing importance of seamless connectivity and functionality for drivers, the luxury automaker has made significant improvements to the Apple CarPlay system, delighting tech-savvy enthusiasts worldwide.

The revamped interface ensures effortless access to a myriad of iPhone apps, navigation, music, and contacts, all while keeping drivers focused and undistracted. Through a close collaboration with Apple, Porsche guarantees the CarPlay system remains cutting-edge, incorporating the latest iOS features. This enhanced integration embodies Porsche's

commitment to delivering unparalleled driving experiences, where innovation and sophistication unite on the open road.

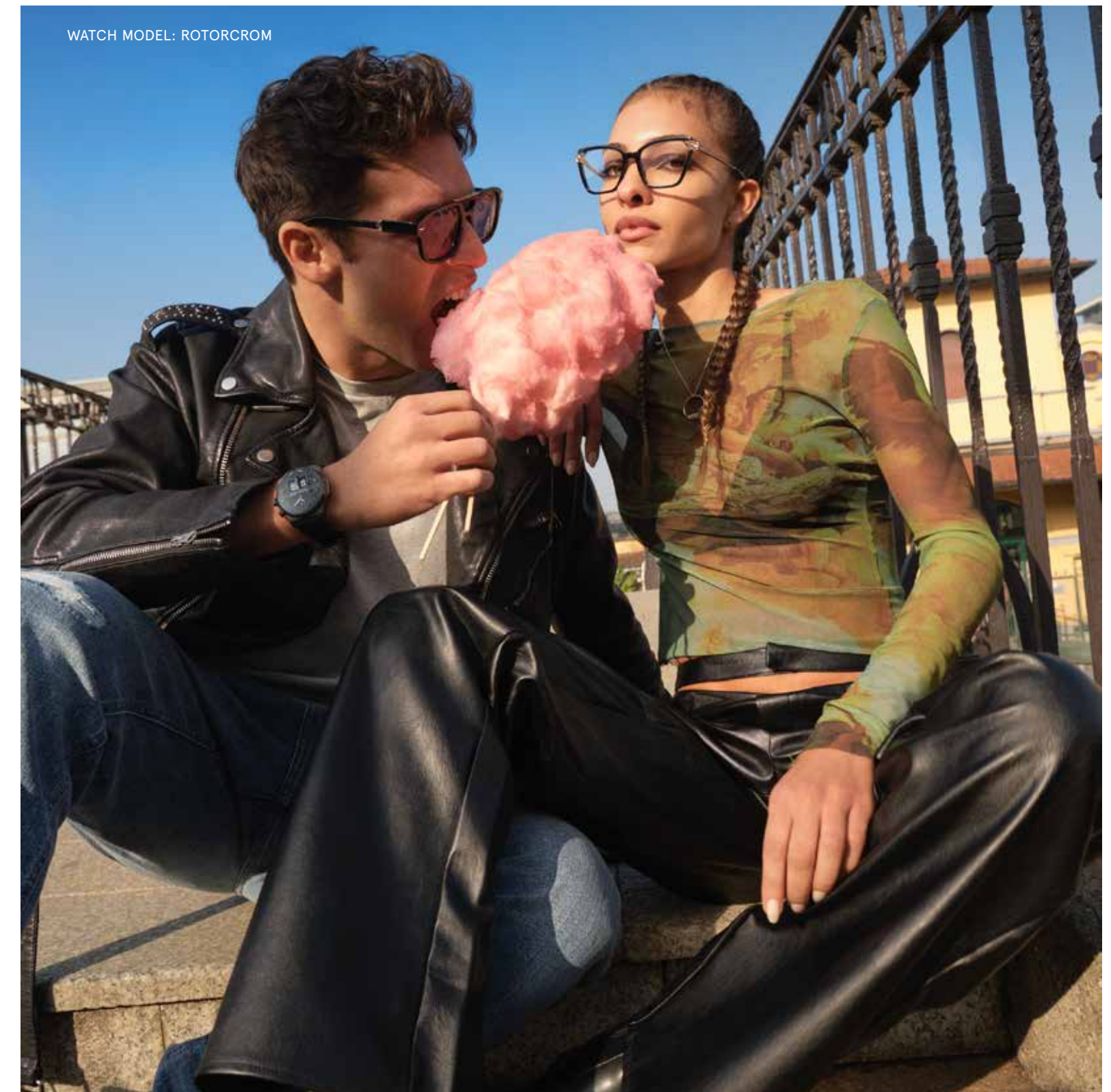
Addressing previous concerns and customer feedback, Porsche has fine-tuned the CarPlay interface, ensuring it now seamlessly integrates with the vehicle's infotainment system. With a focus on optimizing usability and minimizing distractions while driving, the new CarPlay experience allows drivers to effortlessly access their favorite iPhone apps, navigation, music, and contacts with minimal effort and maximum convenience.

Moreover, Porsche's dedication to providing a seamless experience extends beyond just the hardware. The automaker has also collaborated closely with Apple

to leverage the latest software updates and ensure that the CarPlay system remains up-to-date with the latest iOS features and capabilities, ensuring drivers stay at the cutting edge of technology.

This enhanced Apple CarPlay user experience marks a significant milestone for Porsche, demonstrating their commitment to delivering state-of-the-art connectivity solutions that align with the expectations of their discerning clientele. With this much-improved integration, Porsche owners can now enjoy a more immersive and enjoyable driving experience, where cutting-edge technology and automotive craftsmanship harmoniously unite to elevate their journey to unprecedented heights.

AUDACITY WANTED.



POLICE 40 YEARS

Available across all Police islands and leading retailers in UAE

NISSAN FUTURES SHOWCASES INNOVATIONS IN SUSTAINABLE MOBILITY

Max-Out all-electric convertible makes physical debut at month-long event



Nissan Motor Co., Ltd. will hold Nissan Futures, an event showcasing how Nissan is shaping the future of sustainable mobility and innovative design, at its Global Headquarters Gallery from Feb. 4 to Mar. 1.

As part of the event launch, Nissan today unveiled a physical concept model of its Max-Out EV convertible. The model was previously shown in virtual form as part of the Nissan Ambition 2030 vision announced in November 2021 under the Nissan Futures banner. The Max-Out—which will be on display for the duration of the event—embodies Nissan's

ambition to support greater access to both sustainable and innovative mobility.

Nissan Futures will feature interactive customer events, panel discussions with experts, and various displays, all aimed to exhibit its innovations in electrification, vehicle intelligence, power management, vehicle battery reuse, and more. The events and panel discussions will also be available to attend virtually.

Event display and content information is available on the Nissan global corporate website and will be showcased on its YouTube and

LinkedIn channels. Entry to the Nissan Global Headquarters Gallery and participation in the planned events (physically or virtually) will be free of charge.

Max-Out concept

Created on the fundamental concept of being one with the car, the Nissan Max-Out two-seater convertible is designed to provide a liberating sense of openness while offering an enhanced, dynamic driving experience. The Max-Out displays Nissan's innovation to develop a diverse range of advanced and striking vehicles, with a clear vision of how they can



benefit both individuals and society.

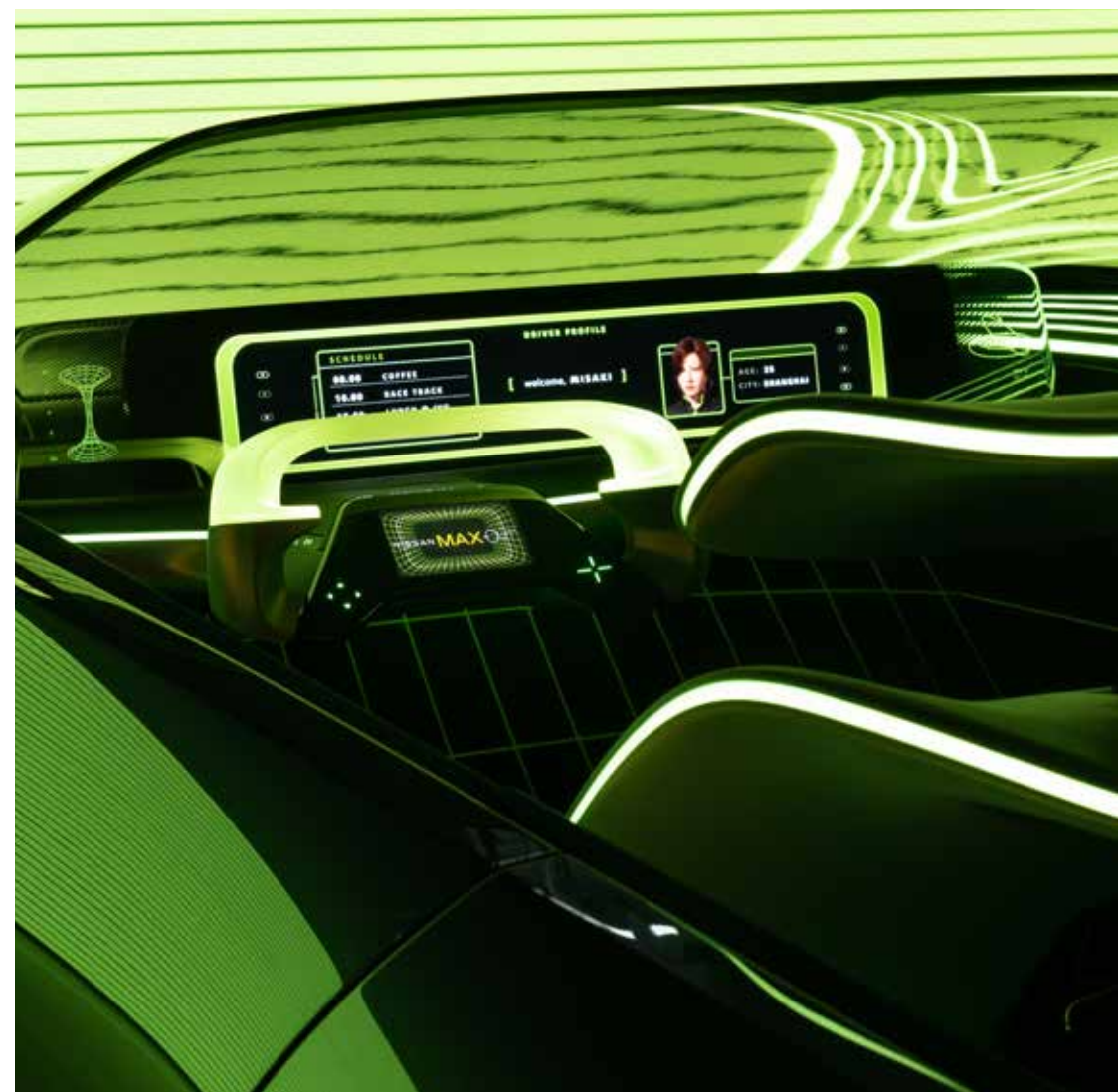
Expert panel discussions on V2X and battery reuse

Guests can gain an understanding of the company's decade-long initiatives in Vehicle-to-Everything (V2X) and battery reuse through two panel discussions on Feb. 21 with experts from Nissan and its partners. These panels will explore how Nissan has been leading the industry through its work with partners to prepare for the various challenges and opportunities the coming large-scale transition to electric mobility will bring.

Talk 4 Futures weekly panel discussions

Nissan works to engage stakeholders who can provide diverse new perspectives on themes such as sustainability, economy, innovation, and culture. Through Talk 4 Futures, Nissan aims to engage in open dialogue with people of influence—including experts and Gen Z consumers—weekly on Saturdays from 13:30 (JST) at its Global Headquarters Gallery.

Through public events such as Nissan Futures, Nissan continues to create opportunities for two-way dialogue that will enable the company to better understand individual and societal needs and drive towards a cleaner, safer and more inclusive world.



Audemars Piguet® - Royal Oak Offshore

Selfwinding - Music Edition



The aesthetic of this 43 mm black ceramic Royal Oak Offshore Selfwinding limited edition is inspired by music with its dial representing a VU meter and its push-piece guards evoking mixer faders. A black interchangeable rubber strap complements the overall design.

Inspired by the world of music, the printed dial of this 37 mm black ceramic Royal Oak Offshore depicts a recording studio equalizer with its meter bars in technicolour for a truly unique aesthetic.

Black ceramic case, glareproofed sapphire crystal and caseback, black ceramic screw-

locked crown, titanium crown guards and links.

Black dial with printed VU meter, blackened white gold applied hour-markers and Royal Oak hands with luminescent coating.

Black rubber strap with "mosaic effect" texture, titanium pin buckle and interchangeable strap system. Additional turquoise blue, yellow and green rubber straps with "mosaic effect" texture.

MB&F



Even the most unpredictable and audaciously led lives, when observed from a distance, form patterns and fall into cycles. This is a fundamental truth that underlies all human existence, whether individual or collective. For Maximilian Büsser and MB&F's creative energy

LEGACY MACHINE FLYING T

The first MB&F Machine inspired by women

comes in seven-year cycles. It was in MB&F's seventh year that the Legacy Machine collection was born, that the first M.A.D. Gallery opened in Geneva and opened the door to the MB&F co-creations.

The 14th year of MB&F unveiled a new avenue of horological exploration, an evolution of creative horizons for founder and company alike: the Legacy Machine FlyingT, first launched in 2019, is the first of MB&F's three-dimensional horological art pieces inspired by women.

A round case in gold or platinum, with a steeply cambered bezel and slender, elongated lugs, often fully set with diamonds. A high, extravagantly convex dome of sapphire crystal rises from the bezel. Beneath the dome, a subtly curved dial plate in various finishes: liquidly black with layers of stretched lacquer, guilloché, vibrant gemstones or glittering with blazing white diamonds.

An asymmetric ventricular opening in the dial plate frames the heart of the LM FlyingT engine – a cinematic flying tourbillon that beats at a serene rate of 2.5Hz (18,000vph). The tourbillon projects high above the rest of the engine, a kinetic, dynamic column that stops just short of the apex of the sapphire crystal dome. Affixed to the top of the upper tourbillon cage is a single large diamond that rotates simultaneously with the flying tourbillon, emitting the fiery brilliance of the very best quality stones.

At the 7 o'clock position – another reference to the numeric theme that runs throughout LM FlyingT – is a dial of black or white lacquer (or gemstone) that displays the hours and minutes with a pair of elegant serpentine hands. The dial is inclined at a 50° tilt so that the time can be read only by the wearer, an intimate communication that highlights the personal nature of LM FlyingT.

DUBAI EXOTIC LIMO



Arrive in Style



Luxury experience for unique occasions



It's time for your grand entry
• CORPORATE EVENTS
• PROMS
• WEDDINGS



Simply travel in style
• CITY & NIGHT TOURS
• SHOPPING SPREES
• AIRPORT TRANSFERS



Dhs 400 / 10 Passengers
Dhs 500 / 16 Passengers
Dhs 600 / 20 Passengers

www.dubaixoticlimo.ae

24 Hours

800 LIMO
5466

P.O. Box: 64086 - Dubai, UAE, Tel: +971 4 286 8635, Mob: +971 50 6957160, rustom@dubaixoticlimo.com




NISSAN PATROL NISMO


Defy Ordinary




nismo

 facebook.com/NissanME

 [/NissanME](https://twitter.com/NissanME)

 [/NissanMiddleEast](https://www.youtube.com/NissanMiddleEast)

 [@nissanmiddleeast](https://www.instagram.com/nissanmiddleeast)

 **NISSAN
INTELLIGENT
MOBILITY**